

CONNECTION

Workbench Extends Productivity for All Environments

FTP Capabilities Increased

by Marvin Denna, Customer Product Support Representative

Professional Series Workbench, with a built-in File Transfer Protocol (FTP) toolset, is designed to boost productivity for developers of both Windows and non-Windows applications. A robust package, Workbench includes a powerful visual editor, project management tools, and an integrated launch pad combining the Synergy/DE tools.

Until now, Workbench was thought of as primarily a Windows development tool. Although it is not distributed on Unix or OpenVMS platforms, when installed on a PC that uses a terminal emulator,

Workbench can be used as the primary editor for all Synergy/DE-supported platforms. If developers set up their code configuration for building on Windows, they can build and run their code from within Workbench. And, unlike other non-Windows editor tools, Workbench can offer much more to the Synergy developer.

FTP tools extend power

Workbench integrates Visual SlickEdit from MicroEdge, Inc., the industry's top-rated visual editor, with Synergy/DE to enable high

productivity for Synergy developers. Moreover, as part of its powerful toolset, Workbench now offers built-in FTP capabilities. With this FTP toolset comes the ability to import source code directly into the editor from any other platform available on the network.

The FTP Toolset defined

Workbench's FTP capabilities include three tools to help manage source code from any remote system: the FTP Profile Manager, the FTP Options Window, and the FTP Client Window.

Continued on page 10

Tiresearch.com Helps Distributors Locate Hard-to-Find Tires

Editor's note: Based in Quebec, InfoExpert Crepeau has 15 years experience in the tire dealership industry. This expertise led to the development of Infoex, a comprehensive, multi-module tire industry management and operating system, now used by tire dealerships throughout Canada and the United States. Information about the company and the Infoex application suite can also be found on www.tiresearch.com.

Finding tires for your car is easy. But your neighborhood tire shop is not likely to help you with a \$10,000 tire for your off-road farm machinery or your rare antique

auto—unless they know about the Web site tiresearch.com.

Developed by InfoExpert Crepeau, Inc. of Gatineau, Quebec, and Computer Advocacy of Toronto, tiresearch.com allows tire vendors anywhere to list their inventories on a site accessible to anyone searching for tires. Launched January 31, it initially featured more than 20 companies' listings of specialty, antique, odd-sized, and other hard-to-find tires, as well as their more common offerings—and more listings have been added each day.

"Tires can range in price from \$50 for an inexpensive automobile

tire to \$50,000 for a specialized mining machine tire," said Ghislain Crepeau, owner of InfoExpert. "So carrying large specialty inventories can be a significant financial burden for a company, and searches for the right tire can be quite time consuming. Tiresearch.com allows dealers to quickly locate and order any tire their customers request, whether it is automotive, truck, airplane, industrial, off-road, or any other kind."

The tiresearch.com site offers vendors two levels of listing service, each with a nominal monthly per-item fee. The vendor with a small inventory can use a simple form on the tiresearch.com site to enter a few

Continued on page 11

Workbench FTP Capabilities

Continued from page 1

In essence, the FTP Profile Manager is the graphical user interface used to set up FTP links between Windows and numerous remote platforms. Synergy developers can define as many sessions with full specifications as required. They can also create more than one session to the same host with each accessing a different remote directory with source files.

Equally important, developers can specify the full path to the local work directory into which they want to download the code for each session.

When creating FTP sessions on secured networks, the FTP Profile Manager enables a developer to set up firewall and proxy specifications for a given session. Last, an FTP session log is created for all sessions that can record time stamping, indicate where to save the log file, and so forth.

The FTP Options Window enables Synergy developers to further customize their FTP sessions. Specifically, a developer can optimize each session's

protocols for the connecting remote host. For instance, developers can set case sensitivity for filenames they bring into Workbench from a Unix system, and later upload those filenames back to the originating system. Also, the developer can specify to prompt or not to prompt the user to upload each time the code is saved in Workbench's editor. In the same way, a developer can customize the FTP session and instruct it not to upload at all when saving code.

Using the third tool—the FTP Client Window—a developer can have several FTP sessions open at one time and can jump from session to session at will. This file manager tool brings the illusion of editing code directly on the remote system and developers still have all of the Workbench editor's powerful resources at their fingertips.

Additionally, developers can open and dock the FTP Client Window to their Workbench editor's desktop so they can manage the files on the various FTP sessions effortlessly. Thus

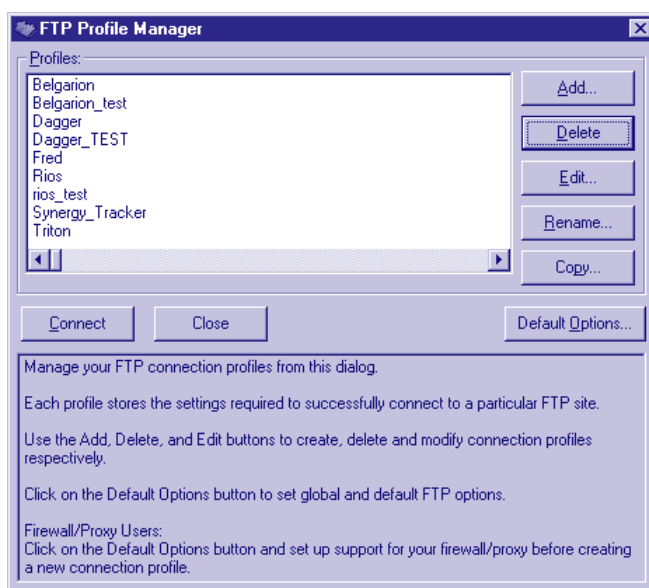
developers can quickly click between the sessions and see what files they have at their disposal for downloading at any time during their edit session.

Once the protocols for the FTP sessions are set up, the developer can begin to work on the remote code. They can edit the code and compile it with the Windows compiler to check for errors. If they have set up their code to build on Windows, they can link it and perform test runs within the Workbench editor. The developer can then simply upload it to the original platform by saving the work. Workbench's FTP tools will upload the modified source code to its original directory, allowing the developer to proceed with further testing on the Unix or OpenVMS operating system.

The Workbench Advantage

Designed to help developers increase productivity, ensure consistency, and speed an application to market for all platforms, Professional Series Workbench provides a Synergy Language-sensitive visual editor; integrates the Synergy/DE core development tools; and offers project management tools. Incorporating the Workbench into a non-Windows development environment can provide numerous productivity enhancements for a development team.

This article only touches on some of the FTP capabilities in Workbench, there are many more. In short, these tools open the door for all Synergy developers—no matter what operating system they are developing code for—to use the Workbench and all of its dynamic features, which adds up to greater developer productivity with the least amount of effort. ↻



The FTP Profile Manager